

Queen's Court of Personal Sales

SEMINAR 2025

\$40,000 Personal Estimated Retail Production

July 1, 2024 - June 30, 2025



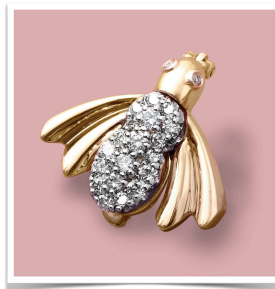
Track your progress with each \$700 wholesale ordered

\$700	\$700	\$700	\$700	\$700	\$700	\$700	\$700	\$700
\$700	\$700	\$700	\$700	\$700	\$700	\$700	\$700	Half Way!
\$700	\$700	\$700	\$700	\$700	\$700	\$700	\$700	\$700
\$700	\$700	\$700	\$700	\$700	\$700	\$700	\$700	You Did it!!!

Queen's Court of Sharing

24 Great Start-Qualified New Personal Team Members

July 1, 2024 - June 30, 2025



Track your progress with each Great Start-Qualified New Personal Team Member

1	2	3	4	5	6	7	8
9	10	11	12	13	14	15	16
17	18	19	20	21	22	23	24